



Raxit Ready-to-use seal 1 meter / 3 meter mounting guide



Estimated Mounting time for an experienced fitter: 10-20 minutes

Materials



1



2

1. Self-Drilling Stainless Steel Screws
2. Raxit Ready-to-use seal 1 meter / 3 meter

Tools



1



2



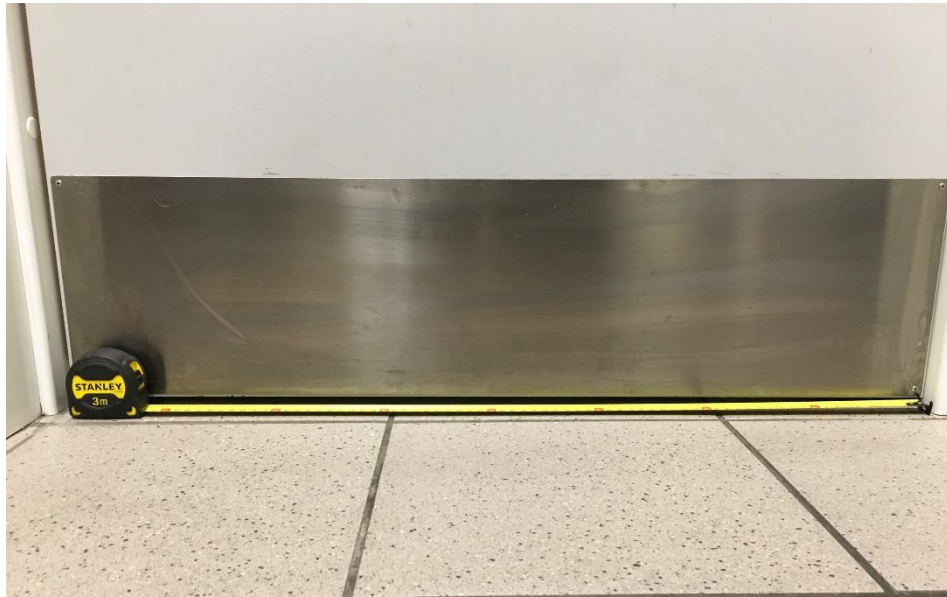
3



4

1. Measure tape
2. Iron Saw
3. Snipping Tool
4. Power Drill

1. Measure the width of the door, gate, etc.



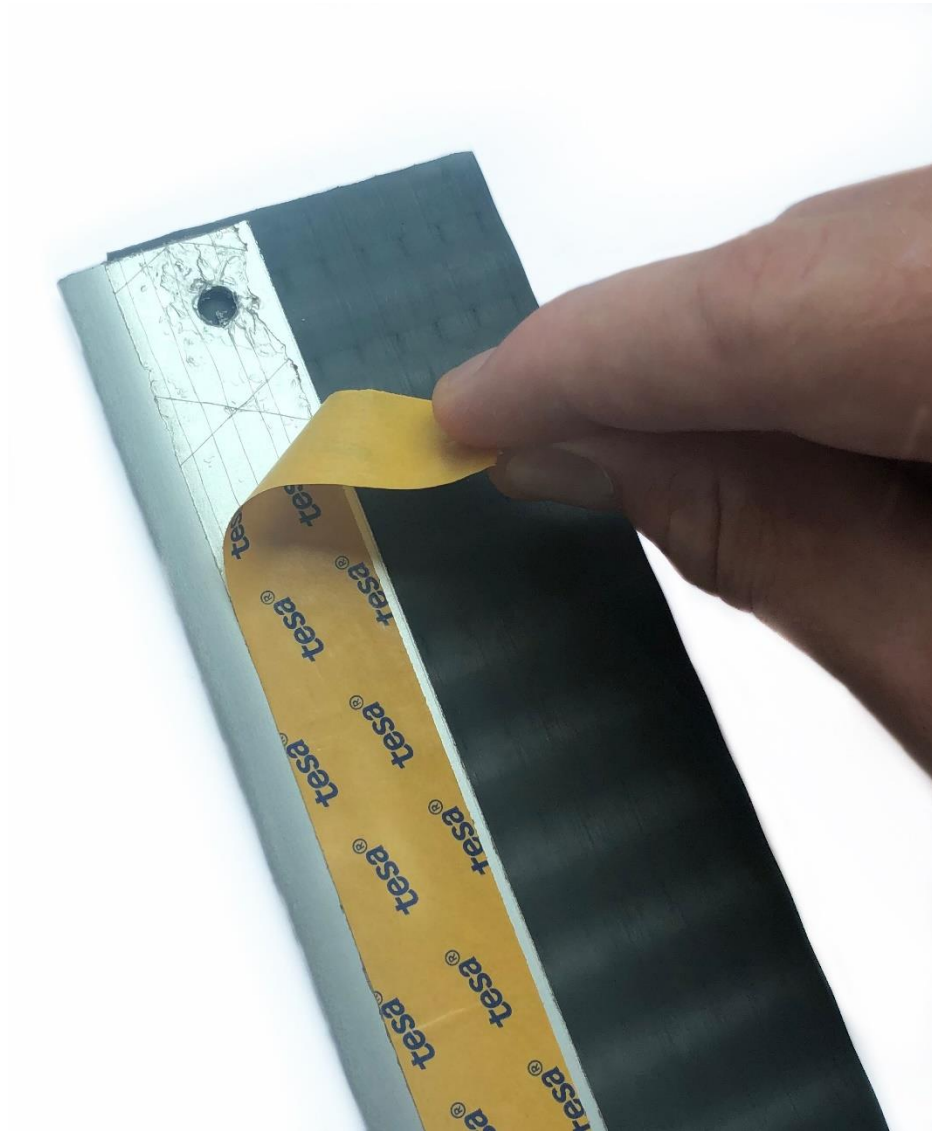
2. Cut the Raxit Ready-to-use according to the measurements taken in point [1]



3. Prior to placing the Raxit Ready-to-use on door, gate, etc. It is important that the Santoprene is pushed tightly into the aluminum strip.



4. Peel the backing of the double-sided tape.



5. Place the Raxit Ready-to-use on the door, gate, etc. and ensure there is a maximum gap of 2.5 mm from the bottom of the Raxit Seal to the surface.
6. Spacer blocks may be used under the seal when mounting to ensure the correct distance between seal and surface (as depicted below).



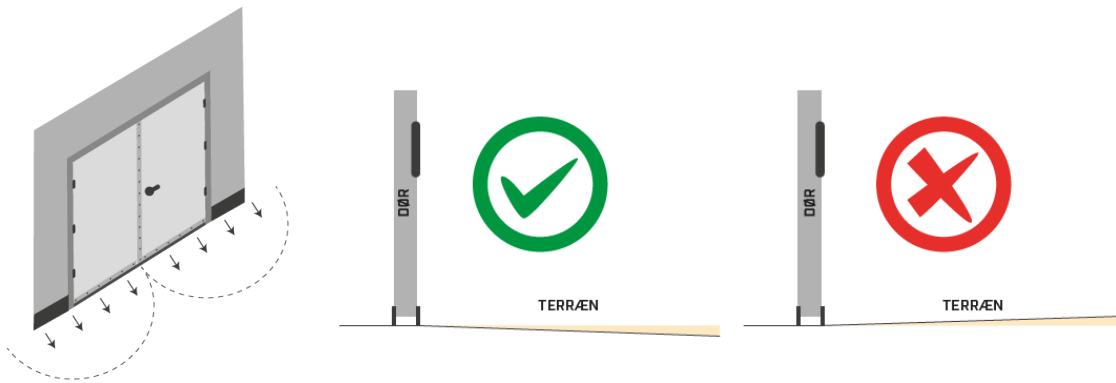
7. Fixate the Raxit Ready-to-use with screws.



General Information

1. The terrain in front of the door should preferably fall away from the door*

- a. This will ensure easy and smooth opening and closing of the door
- b. Reduce the tear and wear of the Raxit Seal to increase its longevity



**The Raxit Seals have been “extreme-stress-tested”. A setting with uneven surface and terrain falling towards the door for 7000 open -and closings without taking noticeably damage*